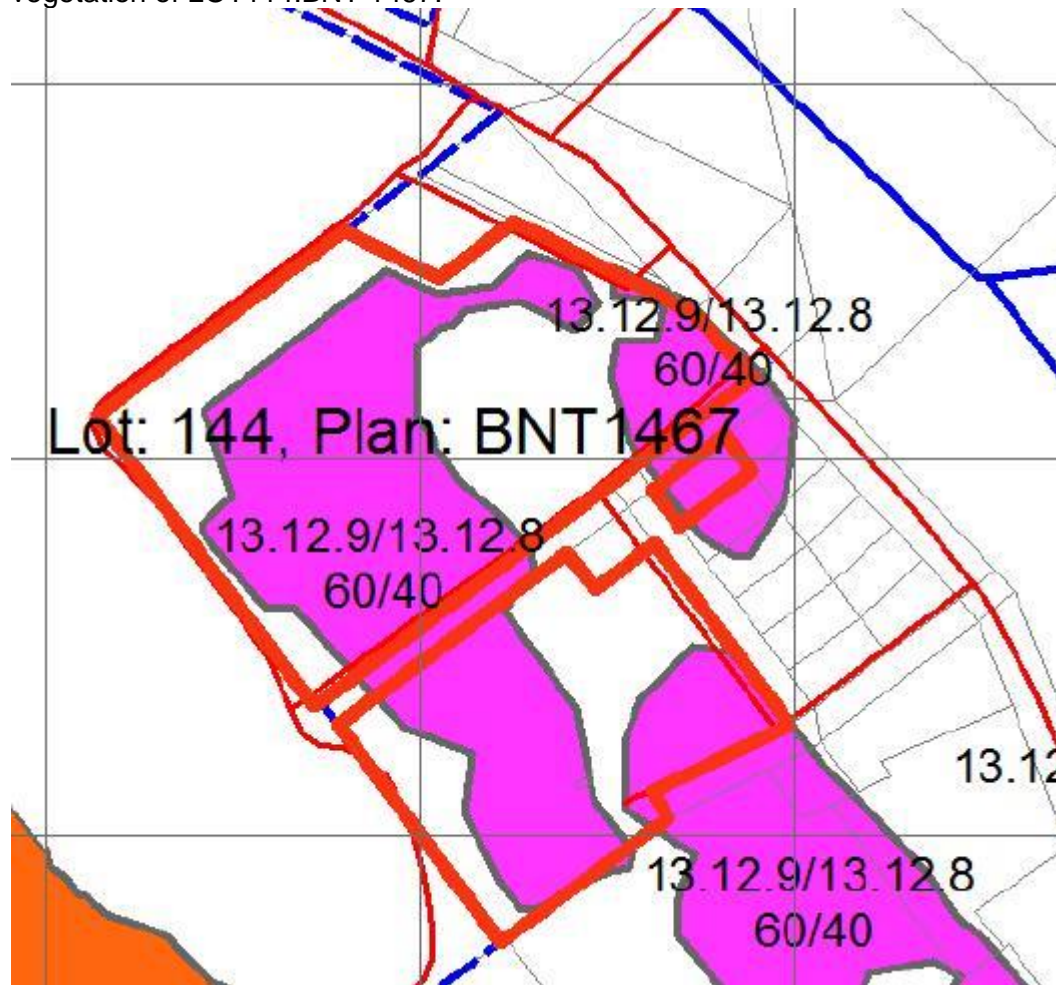


## OUR RED ZONE

At the last AHA meeting there was a short discussion on improving the flora of the AHA custodial land surrounding the old cricket oval.

The following has been put together to help members understand the “make up” of the vegetation of LOT114:BNT 1467.



Distinctive areas of land in Queensland associated with a particular combination of geology, landform and soil types are called Regional Ecosystems (R.E.). In the red zone of LOT 114:BNT 2467 an example of why this vegetation should be well-managed, is because of the status of the tree *Eucalyptus blakelyi* (Blakely's red gum). It is listed as “Vulnerable” by the International Union for Conservation of Nature (IUCN). Vulnerable is Level 4 on a 7 level classification scale where Level 7 is “Extinct”.

Each R.E. is given a three-part code.

The first part represents the primary level of biodiversity classification in Queensland and is called a bioregion. Our bioregion is the New England Tableland and has been given a code of 13.

The second part of the code refers to the land zone. The land zone is a simplified geological classification for Queensland. Our land zone “Hills and lowlands on granite” has been given a code of 12.

The third part refers to the vegetation structure.

Our area is a 60/40 percent mixture of two groups of eucalypts.

The major species represented in the 60% R.E. is coded 13.12.9 with the species of the .9 (vegetation structure) portion being:

*Eucalyptus blakelyi* (Blakely's red gum)

And/or

*E. caliginosa* (Broad-leafed stringybark)

And/or

E. dalrympleana (Mountain gum, Mountain white gum, Broad-leafed ribbongum)  
Other canopy species include E. conica (Fuzzy box), E. bridgesiana (Apple box, Apple gum)  
E. melliodora (Yellow box) and E. youmanii (Youman's stringybark, Red stringybark).  
"Special values" of R.E. 13.12.9 are habitat for the threatened plant species including  
Grevillea scortechinii, Acacia ruppia and Pterostylus woollsii.  
The major species represented in the 40% R.E. is coded 13.12.8 with the .8 portion  
(Vegetation structure) being:

Eucalyptus meliodora (Yellow box)  
And/or  
E. moluccana (Grey box, Gum-topped box) / E. macrocarpa (Grey box)  
And/or  
E. conica (Fuzzy box)

Other canopy species that may be present include:

Angophora floribunda (Rough-barked apple) , Eucalyptus caliginosa and E. blalelyi.  
"Special values" for R.E. 13.12.8 are potential habitat for the Nature Conservation Act (NCA)  
listed species Bertya recurvata and Merbelia confertiflora.

Fire management guidelines for R.E. 13.12.8/9 are as follows:

SEASON: Autumn / Winter (April/August)

INTENSITY: Low

INTERVAL: 5 – 15 years

STRATEGY: <20% of stands in any year, burning patches each year whenever possible.  
Do not repeat at 5 year intervals.

Alan Kerr  
December 2022

## **Project Name: Amiens Memorial Park Habitat Improvement (AMPHI)**

*Please give feedback or ask questions about anything (including the name!) to do with this project.*

*Unfortunately as this grant application is due on 14<sup>th</sup> Feb (prior to the AGM) there hasn't been time or opportunity to poll for feedback before now as the emphasis has been on responding, organising collaborators and putting together the budget.*

*Below is an overview of the Project for your information and of course feedback.*

Dale

Dale Minchenton ([dale.minchenton@activ8.net.au](mailto:dale.minchenton@activ8.net.au))

### **About the Project**

Objective:

To obtain funding to restore the Amiens Memorial Park environmental area for the purpose of:

- engaging the local community and visitors to familiarise them about this area on their doorstep;
- restoring the environment to a condition that encourages usage through short bush walks, plant identification, bird watching, and relaxing in a quiet space
- protecting the regional area-of-concern eco-system
- maintaining and enhance through assistance with weed-control, access paths, interpretive signage
- engaging with local indigenous people to assist with interpretive signage containing indigenous artwork
- protecting traditionally-used plant species
- providing meaningful engagement of membership/volunteers

This will provide protection for endangered regional ecosystems (13.12.8/9) which contains many vulnerable plant species.

### **Aims of the Project**

What are the aims of the project?

- Provide improved access through laying 1.3 km decomposed granite (deco) trails with location/pedestrian traffic signage;
- Develop interpretive signage for flora, fauna, geological features, historical landmarks;
- Protect and enhance endangered and other native vegetation through weed control of blackberry, pine wildings, love grass and prickly pear as well as implement a fire regime consistent with the Queensland Regional Ecosystems Guidelines;
- Plant native species to enhance existing flora;

- Rewild Sports Ground area with a Community Native Garden
- Remove rubbish from the site;
- Engage AHA and community members through providing flora/fauna identification skills to enhance knowledge and participation;
- Raise awareness of current coach tours visitors of local flora/fauna/geology;
- Partner with local stakeholders to develop and deliver Humanities and Social Sciences (HASS) curriculum work unit “Local biodiversity – Endangered Species Granite Belt Region”; and
- Enhance local knowledge of fauna through partnering with expert third parties, using appropriate monitoring equipment.

### **Implementation Schedule**

Map of site showing tracks and features referenced.





### Stage 1 - 2023

- Lay Legacy Centre to Oval Trail.
- Clear oval posts in preparation for community “Paint a Post” project launch event.
- Erect storage shed.

- Purchase weed control related equipment and herbicide.
- Begin weed control Community Native Garden.
- Begin weed control of blackberry/pine wildings/prickly pear.
- Begin fauna monitoring.
- Lay Memorial Avenue Walk deco track.
- Lay Rock Trail deco track.
- Lay Wetland Walk deco track.
- Acquire permit for slow burn.
- Begin content work on signage.
- Complete flora survey with IPHA and Granite Belt Wildflowers Consortium produce summary document for members.
- Complete bird survey with third party assistance.
- Complete signage content/artwork.
- Remove rubbish from site.

### Stage 2 – 2024

- Continue weed control on love grass.
- Instal directional signage.
- Complete content/artwork for flora/fauna panels.
- Build/instal framework/structures for interpretive signs.
- Print signage.
- Install bikerack.
- Begin tube stock planting in Community Native Garden.
- Paint oval posts.

### Stage 3 – 2025

- Continue weed control.
- Complete plantings.

## BUDGET – AMPHI

Item #	Expenditure Item	Details	Amount (including GST)
1	Deco track making	1276 metres	\$11,661
2	<b>Signage</b>	Signage Artwork Interpretive	\$4,719
3		Interpretive Shelter	\$2,800
4		A3 size supports	\$910
5		Directional signs	\$652
6	<b>Weeds</b>	Glysohate	\$878

7		Blackberry Herbicide	\$55
8		Herbicide dye	\$28
9		2 x 15 backpacks	\$326
10		Hand tools/Safety gear	\$195
11		Brush cutter and batteries Makita 36V Heavy Duty	\$1,149
12		Storage shed	\$870
13	<b>Regeneration</b>	Tube stock 500 @ \$5	\$2,500
14	<b>Rubbish management</b>	Truck, tip fees	\$968
15	<b>Ready-mix concrete</b>	For signs, etc.	\$320
16	<b>Paint</b>	For oval posts, brushes	\$561
17	<b>Volunteers</b>	Catering 100 work events, 3 persons average, \$12 per head	\$3,600
18		Fuel	\$120
19	<b>Camera</b>	For fauna monitoring	\$220
	<b>Flora survey</b>	Rare species expert including delivery of plant specimens to Qld Herbarium	\$600
20	<b>Bike Rack</b>	6-bay, excluding securing	\$77
22	<b>Publicity</b>	Sausages for 4 X Open Day BBQs	\$200
		4 X Open Day publicity	\$200
	<b>Administration</b>	Audit fee	\$300
		Sunscreen	\$50
	<b>TOTAL</b>		\$33,959.00

*The maximum amount of this grant application is \$50,000 with a available funding of \$500,000, however we believe (and have been told by the Department of Environment and Science) that our application is a good fit for the requirements.*

## **Collaboration Partners**

Indigenous Plants for Health Australia (IPHA)

Stanthorpe Rare Wildflower Consortium

Thank you for reading this summary.

Dale